

"L" Series by

The Prudent Choice

*Remarkable performance
with only 1.2 gallons of
water per rack!*

The "L" Series

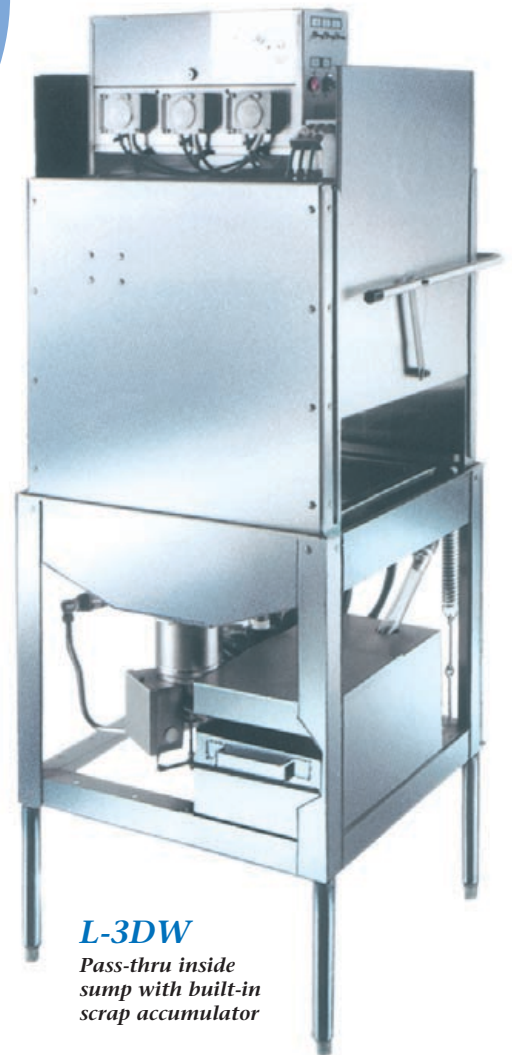
DECREASES your Chemical Usage
SAVES on Sewer Surcharges
REDUCES Heating Costs
LOWERS Water Bills

*Maximum Capacity:
55 racks per hour!
(60 second time cycle)*



L-3DWC

*Corner inside sump
with built-in scrap
accumulator*



L-3DW

*Pass-thru inside
sump with built-in
scrap accumulator*

*A true
LOW-ENERGY,
dump and fill
dishmachine!*

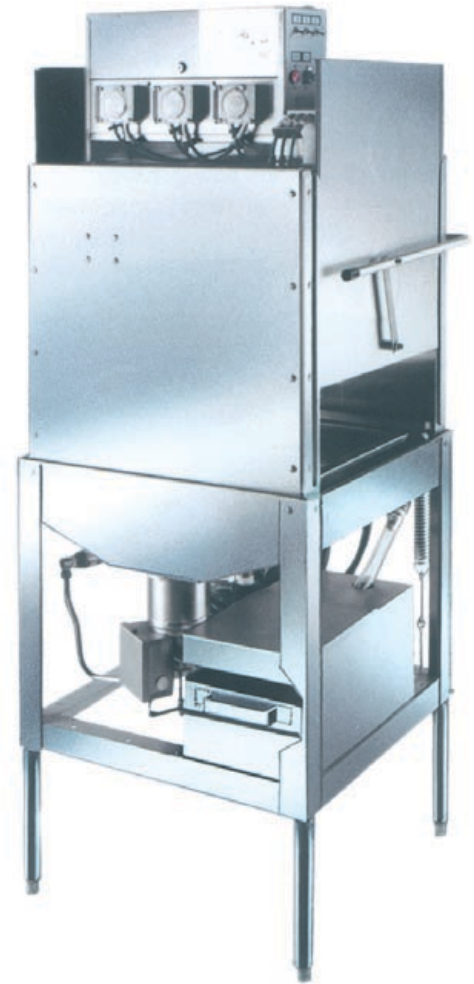
All "L" Series, Low-Water Machines are Convertible
(corner to pass-thru or pass-thru to corner).

A True 3-door Design, with only two
doors opening in either direction.

"L" Series

LOW WATER USE - HIGH SPEED OPERATION

Available in 60, 72, and 90 second time cycles
 Two-stage filter protects pump and spray jets
 Stainless steel sump and impeller
 1.2 gallons of water per rack



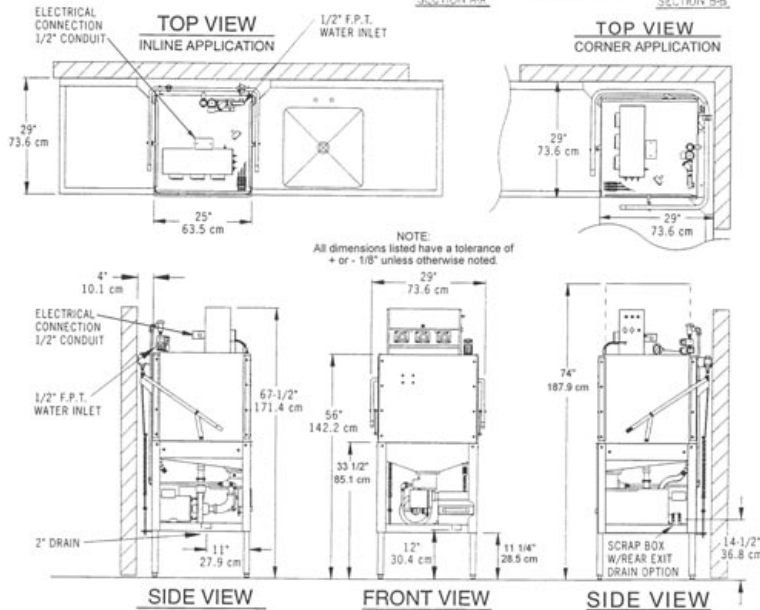
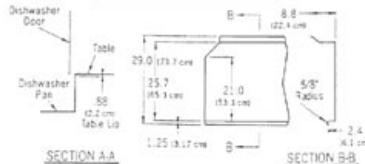
- **Top Mount Controls**
- **Exterior Mounted Chemical Pump Heads**
- **Quick-disconnect, Easy Service Access, Electrical Controls**
- **True 3-Door Design, with only 2 Doors opening in either configuration**
 - Eliminates water on back wall
 - Doors stay in alignment
- **Eye-Level Temperature Gauge**
- **Built-in De-liming Switch**
- **Large Capacity Internal Scraper (Inside Sump Only)**
- **No-Adjustment Solenoid Replacement**
- **1 1/2 H.P. Wash & Rinse Pump**
- **Prime Switches**
- **Automatic Chemical Feed**
- **Nylatron® Strips to Protect Stainless Doors**

CAUTION:

Electrical and plumbing connections should be made by a qualified Service Person who will comply with all available federal, state, and local health, Electrical, Plumbing, and Safety codes.

*Manufacturer reserves the right to modify these specifications in compliance with regulatory agencies and manufacturing expediency.

TYPICAL TABLE DETAILS



NOTE:
 All dimensions listed have a tolerance of + or - 1/8" unless otherwise noted.



L Series SPECIFICATIONS

	FAMILY MODELS		
	L60-3DW L60-3DWC	L72-3DW L72-3DWC	L90-3DW L90-3DWC
NSF RATED CAPACITY (RACKS/HOUR)	55	46	37
WASH TIME (IN SECONDS)	36	43	50
RINSE TIME (IN SECONDS)	15	19	30
DWELL (IN SECONDS)	09	10	10
GALLONS PER HOUR	66	55	44
TOTAL CYCLE TIME (IN SECONDS)	60	72	90
WATER TEMPERATURE OF SUPPLY WATER (NSF)	120° F. MINIMUM or 49° Celsius		
WATER CONSUMPTION (NSF RATED)	1.2 GALS. PER CYCLE or 4.5 liters/cycle		
MOTOR RATING	(1.125 KW) 1.5 HORSEPOWER		
ELECTRICAL RATING (NEC)	115 Vac, 20amp breaker, 50/60Hz, 1 phase Connect to Supply Source using 10-12 AWG Copper wires using non-time delay fuse at 20 amp rating or 20 amp circuit breaker.		
RACK SIZE	STANDARD 19.75" X 19.75" or 50.3 x 50.3 cm		
DOOR CLEARANCE	17.75" TALL x 20.75" WIDE or 45.1 x 52.7 cm		
WATER INLET	(1/2") F.P.T.		
DRAIN SIZE (Scrap Trap)	2" O.D.		
HEIGHT (ADJUSTER FEET WILL GIVE)	MIN: 67.5" MAX: 68.48" or 171.5 to 173.9 cm		
WIDTH (OVERALL)	29" or 73.8 cm		
WIDTH, TABLE TO TABLE (INLINE MODEL)	25" or 63.5 cm		
DEPTH (OVERALL)	28" or 71.1 cm		
SHIPPING WEIGHT	307 POUNDS or 139.7 kg		
SHIPPING VOLUME (CRATED)	54.2 CU. FT. or 1.53 cu. meters		